

# VESDA VLI INDUSTRIAL HARSH ENVIRONMENTS

Xtralis has taken its 25+ years of proven market leadership and created a Very Early Warning Smoke detector that has been specifically designed to:

- Withstand harsh environments
- Maintain its sensitivity over the life of the detector
- Provide best in class performance
- Provide a lower Total Cost of Ownership

## WITHSTANDING HARSH ENVIRONMENTS

The design of Industrial VESDA VLI enables the product to be deployed into many industrial applications without special application engineering system design support and enhanced maintenance procedures previously required. Key features that enable deployment into these environments include:

- World's first patented fail-safe intelligent filter to eliminate the need for external filters and significantly extend service life
- Inertial secondary filtration removes large dust particles further extending detector service life and safeguarding against nuisance alarms
- IP 54 / NEMA 3 enclosure to provide protection from the environment eliminating the need for costly enclosures
- Extending total aggregate sampling pipe capability up to 360m (1200 ft) to cover larger areas with fewer detectors

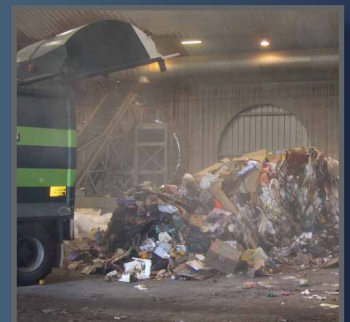
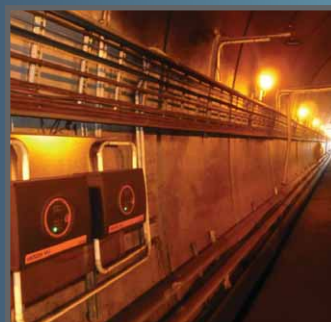
Additionally, a 100% modular design enables field replacement of individual detector components reducing down time and spare part inventory. No longer does the entire detector have to be replaced - another industry first.

## MAINTAINING DETECTION SENSITIVITY THROUGHOUT DETECTOR'S LIFE

Fundamental to Industrial VESDA VLI's ability to provide performance throughout its service life is the use of VESDA's patented absolute detection technology that uses a clean air barrier to keep the components of the optical detection chamber clean. In addition, a new, innovative and patented Clean Air Zero feature provides the highest degree of detector sensitivity stability known to the market while maintaining absolute smoke detection.

VESDA does not rely on any "predictive" algorithms to compensate for short term or long term drift because these approaches inevitably lead to degraded detector performance and extended detection times, if not missing fire events completely.

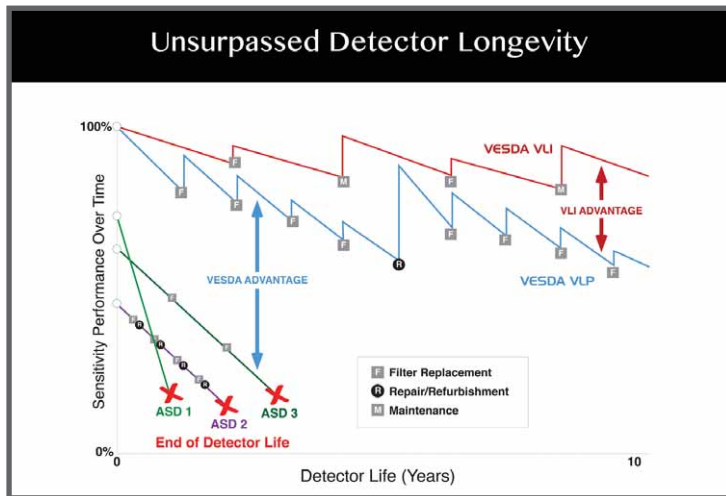
The VESDA Advantage offers the ability to set alarm thresholds above specific site background contamination levels to further safeguard against nuisance alarms.





## BEST IN CLASS PERFORMANCE

Results from independent 3rd party accelerated performance testing shown in figure 1 unequivocally demonstrates the superiority of Industrial VESDA VLI compared to other ASDs on the market. Testing not only predicts that Industrial VESDA VLI will have the longest service life but even at the end of its predicted service life its sensitivity is still higher than competitive unit's "out of box" sensitivity.



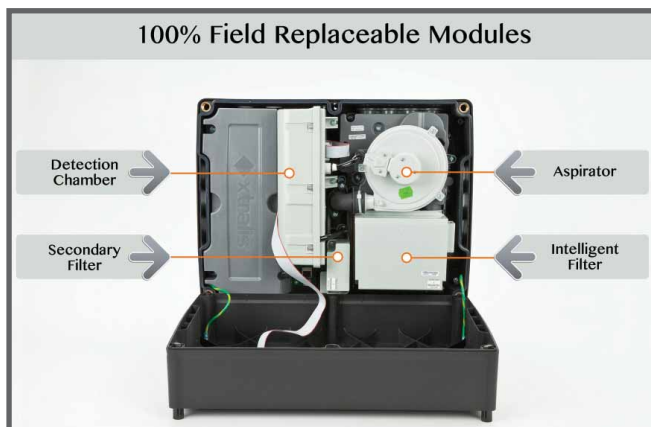
## LOWER TOTAL COST OF OWNERSHIP

The net result of all the unique features and performance characteristics is that Industrial VESDA VLI delivers a 60+% lower Total Cost of Ownership than other ASD detectors on the market.

## FURTHER INFORMATION AT [XTRALIS.COM/VLI](http://XTRALIS.COM/VLI)

Industrial VESDA VLI Product Brochure, Doc. 20015

Industrial VESDA VLI Technical Data Sheet, Doc. 17115



## APPLICATIONS

Industrial VESDA VLI is ideally suited to protect many industrial applications, including but not limited to:

- Power Generation
- Petrochemical Plants
- Conveyor protection
- Mining
- Manufacturing
- Processing Plants
- Tunnels
- Pulp & Paper Production
- Warehouses
- Water Treatment
- Transport
- Timber Production
- Fertilizer Plants
- Abattoirs
- Laundries
- Cold Storage
- Textile
- Lift shafts
- Stables, and more...

Facilities Protected by Industrial VESDA VLI

- **Kaltex (Mexico)**  
Cotton and Textile Plant
- **Cutler Airforce Base (US)**  
Very Low frequency Antenna
- **ArcelorMittal Steel Mill (US)**  
Electrical Equipment Room
- **Superior Essex (US)**  
Manufacturing
- **SSAB Tunnels (US)**  
Tunnel
- **Southern Companies (US)**  
Boiler Feed Pumps
- **New Zealand Steel (New Zealand)**  
Switch Room
- **AELEC (Australia)**  
Tamworth Equestrian Centre

[www.xtralis.com](http://www.xtralis.com)

The Americas +1 781 740 2223 Asia +86 21 5240 0077 Australia and New Zealand +61 3 9936 7000  
UK and Europe +44 1442 242 330 Middle East +962 6 588 5622

Doc. 20716\_03

**VESDA VLI**  
by **xtralis**